

Hamlet's and Ophelia's "Body" Biography

For the characters Hamlet and Ophelia, you will be creating a body biography (one for each character)—a visual and written portrait illustrating several aspects of the character's life within the literary work. Begin, of course, by drawing the outline of the body. Then you are going to fill your body with some of the suggestions listed below, but you are free to come up with your own creations. As always, the choices you make should be based on the text. Most of all, your choices should be **creative**, **analytical**, and **accurate**.

REQUIREMENTS

Although I expect your biography to contain additional dimensions, your portrait **must** contain the following:

- A review of the character's actions/events
- Relationships to other characters
- Visual symbols
- The four most important quotes (either *by* or *about* your character) relating to Hamlet and Ophelia. (Be sure to copy correctly and cite.)

Suggestions:

(1) Placement: Carefully choose the placement of your text and artwork. For example, the area where your character's heart would be might be appropriate for illustrating the important relationships within his/ her life. The hands might refer to actions/deeds or accomplishments of the character.

(2) Spine: Actors often discuss a character's "spine." This is his/her objective within the work. What is the most important goal for your character? What drives his/her thought as actions? The answers to these questions are his/her "spine." How can you illustrate this?

(3) Virtues and vices: What are your character's most admirable qualities? His/her worst? How can you illustrate it?

(4) Symbols: What objects can you associate with your character that illustrate his/her personality/character? Are there objectives/desires/goals mentioned within the work itself that you could use? If not, choose objects that especially seem to correspond with the character.

(5) Colors: Colors are often symbolic. What color(s) do you most associate with your character? Why? How can you effectively weave these colors into your artwork?

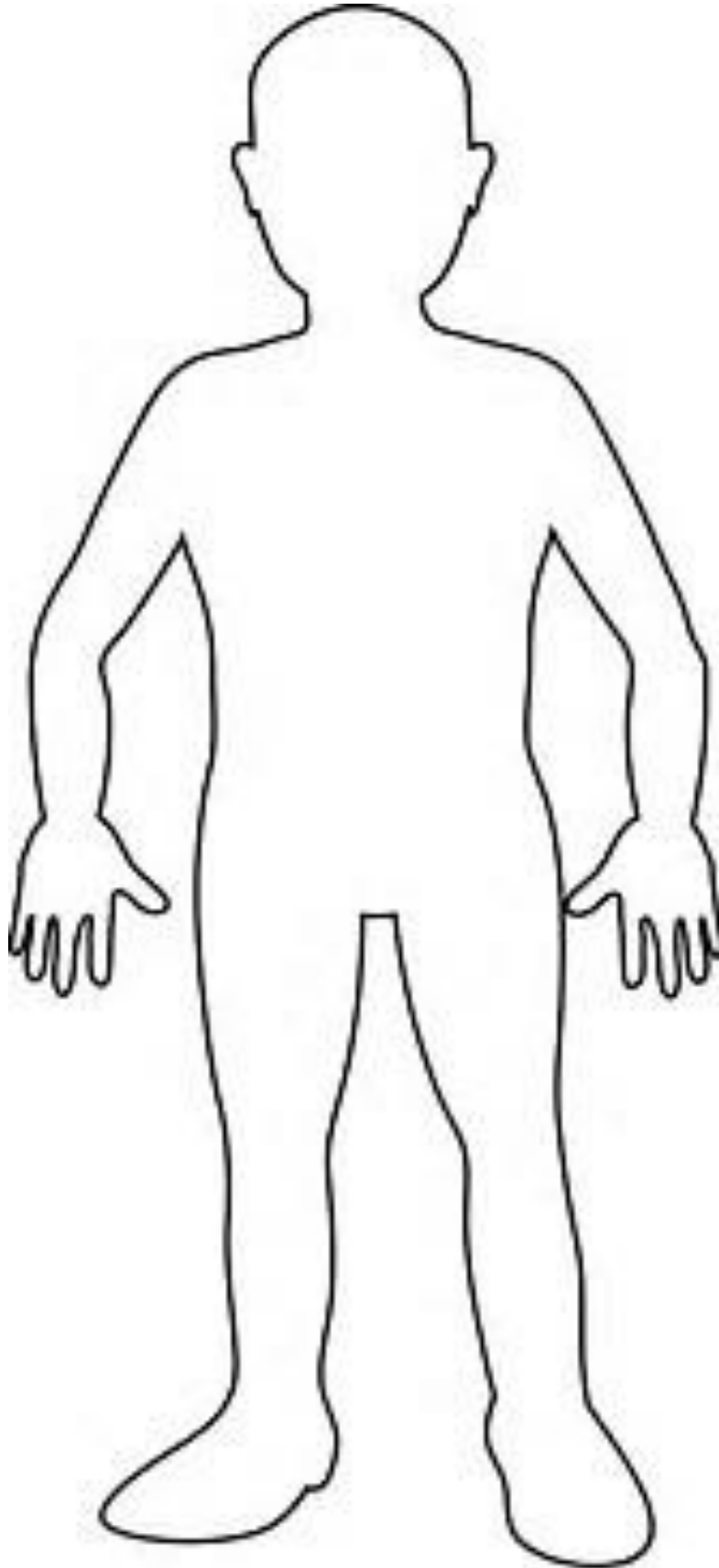
(6) Mirror, Mirror: Consider both how your character appears to others on the surface and what you know about the character's inner self. Do these images clash or correspond? What does this tell you about the character? How can you illustrate this mirror image?

(7) Changes: How has your character changed within the work? Trace the changes within your text and/or artwork.

*These projects are a way to show YOUR interpretation of the play. I do not expect any two students' projects to look the same. Although creativity counts, your ability to draw will not. (I am no artist myself.)

Hamlet is one of my most favorite Shakespearean plays—so relevant to any time period! I hope you will enjoy it as much as I do and will have **fun** with your projects.

You may use the outline below or create your own. Be creative!



The Metamorphosis

Part I

Introduction

In part, you will read how one man reacts when the world of dreams seems to have intruded upon the real world. Right away, *The Metamorphosis* draws readers into the nightmarish world of Gregor Samsa, a young man who has mysteriously undergone a monstrous transformation. For many readers, Gregor's dehumanizing **metamorphosis and alienation symbolize fear and insecurity within the human condition** during modern times. As you read this puzzling work, keep in mind that scholars and critics have argued for almost a century about what it means. One reason for Kafka's immense influence and popularity is this openness to many interpretations.

Chapter 1 assignment:

After you finish reading Chapter 1, answer the following questions ***thoroughly*** to help you understand the events that take place in chapter 1. ** The more you take notes and develop your answers, the better you will understand what you read.

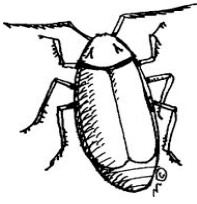
REMEMBER: Kafka is not the kind of writer who will take you by the hand and lead you into his meaning, you will need to find your way there yourself.

1. How does Gregor feel about his job? What evidence in the story reveals his feelings?
2. What is Gregor's role in his family? Why does he have so much responsibility? How is this role about to change?
3. What happens to Gregor when he leaves his room to meet the office manager? What does this episode reveal about Gregor's father?
4. From Gregor's point of view, what might be some positive aspects of his metamorphosis into an insect?
5. What circumstances in Gregor's life might have caused him to feel dehumanized, even before the metamorphosis took place?
6. In part one, Kafka portrays Gregor as a dual being, both human and insect. For example, he must figure out how his new body functions, while at the same time he has the thoughts and feelings of a human. Make a chart, with "HUMAN" vs. "INSECT," and write down quotes or details that characterize each side from chapter 1.

HUMAN

INSECT

Gregor's Family Relationships

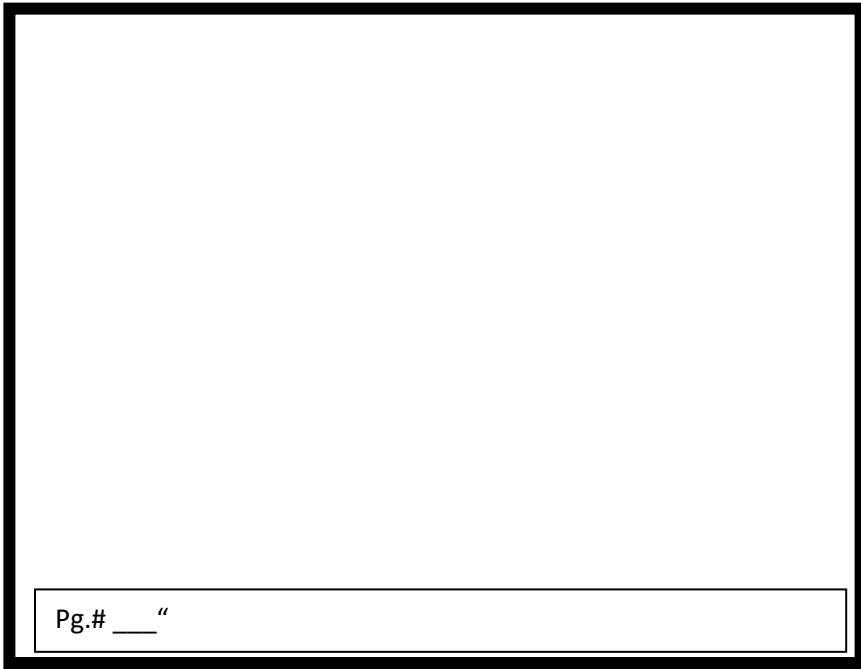


Directions: Describe Gregor's relationship with each of the following family members by filling out the chart below.

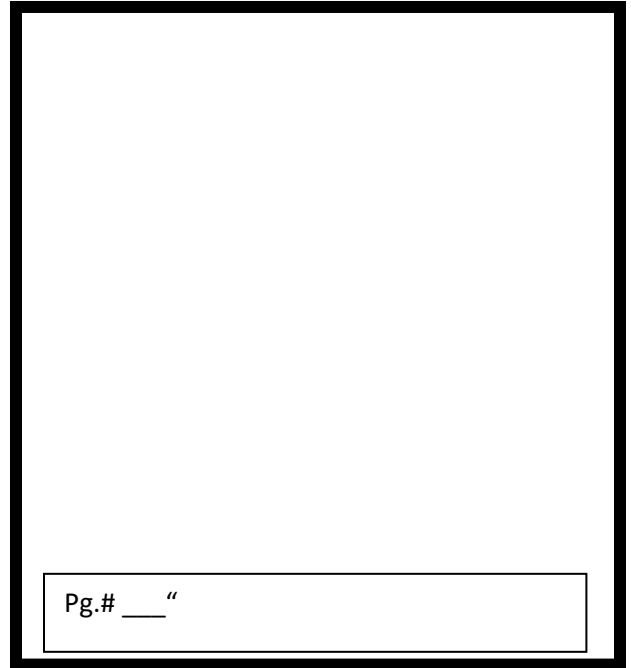
	DESCRIBE RELATIONSHIP THAT THIS PERSON SHARES WITH GREGOR INITIALLY	HOW DOES THIS PERSON CHANGE AFTER GREGOR'S TRANSFORMATION?	WHAT DOES THE CHANGE IN RELATIONSHIP WITH GREGOR TELL YOU ABOUT THIS PERSON? SIGNIFICANCE?
GREGOR'S FATHER			
GREGOR'S MOTHER			
GRETE (GREGOR'S SISTER)			

STORYBOARDING Kafka's Metamorphosis NAME: _____

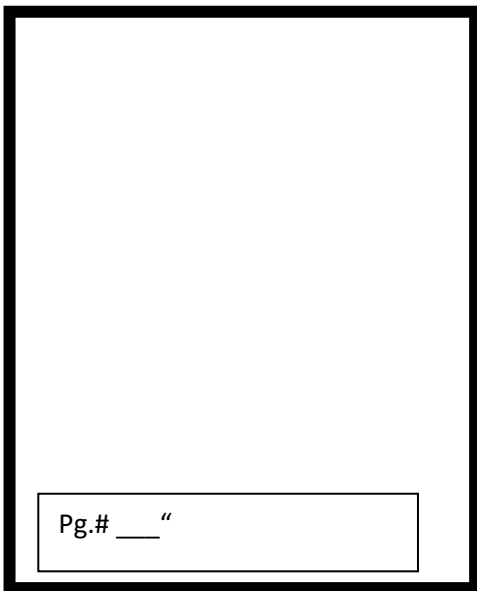
Directions: Using **Part II** of Kafka's Metamorphosis, visually depict **FIVE** PASSAGES in order to summarize the action of the chapter. You must use QUOTES as your captions in the lower section of your "comic strip." Stick figures, of course, are OK... as long as you demonstrate your thoughtful understanding of the text.



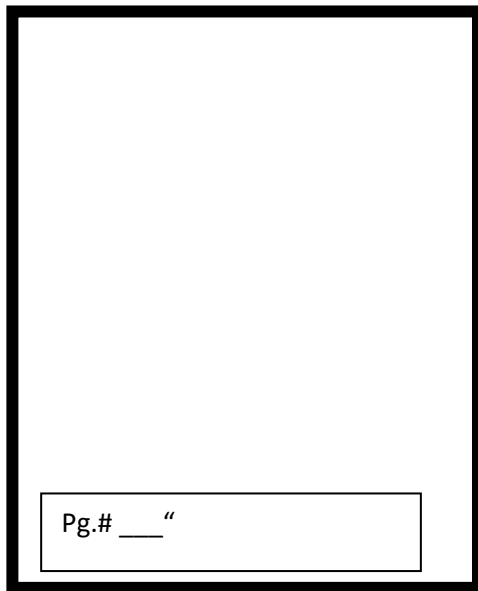
Pg.# ____



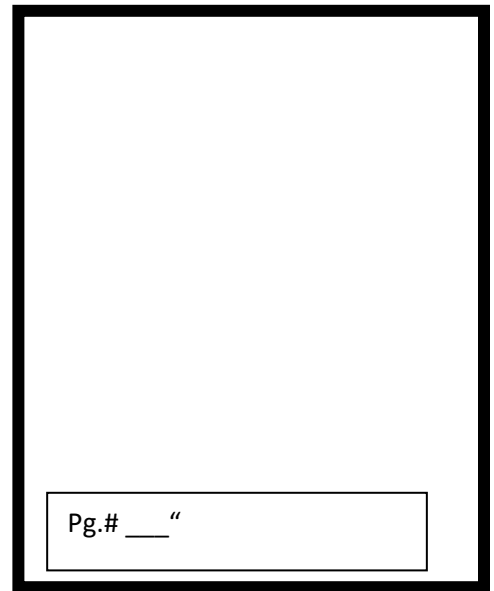
Pg.# ____



Pg.# ____



Pg.# ____



Pg.# ____